



Both success and failure are enemies of focus ...

SUNDAY REVERB

Reverb (Sunday School) focuses on the mission of God in the world. God has a mission for all mankind and for each person. This study educates students about God's overarching plan as well as His individual plan for each person to impact the world around him.
Confirmation @ 9:45am

SUNDAY NIGHT ESM

Middle School ONLY
5:00 - 5:30
Combined Meal
5:30 - 6:00
Combined Group
6:00 - 6:30
High School ONLY
6:30 - 7:00

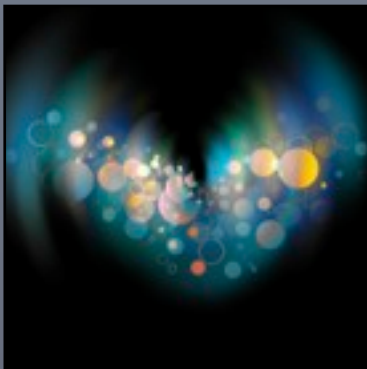
WEDNESDAY NIGHT ESM

Middle School ONLY
5:30 - 6:00
Combined Family Dinner
6:00 - 6:30
Combined Group
6:30 - 7:00
High School ONLY
7:00 - 7:30
eGroup Sr. High 6:15-8

ELEVATE



ESM looks to be a place where students can come and engage with their peers and with our leaders to create a faith-based community in our time together.



Are you holding on to nouns???

This month we will be exploring the cases of protesting true love.



If you know someone who isn't perfect and doesn't have a church home, please send them our way.

Ozark Mission Project

OMP - For Who: Sr. High

Date: July 22-28

Deposit: \$50.00

Ozark Mission Project is a non-profit mission of the Arkansas Area United Methodist Church, organized for ministry to "persons in need" in response to Jesus Christ's call to servant hood. OMP's vision is to be a Christ-led mission opportunity offering a diverse cultural experience that equips youth to make a global difference.

Service Over Self @ Memphis

SOS - For Who: Jr./Sr. High

Date: June 3-9

Deposit: \$50.00

Over the years, more than 20,000 volunteers have spent time with SOS in the heart of Memphis working alongside urban homeowners. We have repaired over 700 homes. Our actions will validate our words and our message must be filled with selfless compassion. We desire to introduce homeowners, campers, volunteers and neighborhoods to the One who can change our home and our heart – Jesus Christ.

Student Life @ The Beach

SL - For Who: Jr. & Sr. High

Date: July 9-13

Deposit: \$70.00

The Christian life isn't easy and some would say it shouldn't be. So, how do your students look at their Christian life? Do they look at it as a chore? Do they look at it as a challenge? Do they see it as a journey and not a destination? We want to help your students live a life without boundaries.

A life in which they are bold not just for the sake of being seen, but bold because they serve a God that is bold. A God that sees what they can become. How do they do that? They do that by Being on Guard, Standing Firm in the Faith. Being Courageous and Being Bold.

Being **Audacious**. " Be on your guard; stand firm in the faith; be courageous; be strong." 1 Corinthians 16:13

**Last Months Message:
The Grace That Changed
Your Garments**





Delivered by His Everlasting Love . . .

And immediately he arose, took up the bed, and went forth before them all; insomuch that they were all amazed, and glorified God. Mark 2:12

Once the Lord has established Himself as Lord over your spirit, He seeks to establish Himself as the Lord over your life. He anoints you, calls you, and leads you into service. He gives you the strength and energy and ability to carry the very thing that once was the mark of your sickness.

Once Jesus had healed this man and raised him up from his sickbed, this man raised up his sickbed and carried it away. When this palsied man was forgiven and healed by Jesus, he had a bed--but the bed no longer had him.

True deliverance is when you have control over the thing that once controlled you.

You can control your temper, when once your temper ruled you.

You can control your spending habits, when once your lust for things had control over you.

**WE
GIVE
BEFORE
YOU
? LEVEL**

**Your
Problem May
Remain But it's
Not Bossing
You**

You can control the wandering eye that once was always looking for a new woman/man to conquer.

Your problem may remain, but it isn't bossing you. It isn't in control of you. You are in control of it.

And to whom does the Lord often call you to minister?

To a person who is in the very condition you were in before you were brought to Jesus! It is to that person that your witness is the most effective

because you can say with authority, "I once was lost just like you. But now I am found. I once was blind. But now I see. I once was lying paralyzed and out of control in a sick condition just like you, but now I am healed. Jesus made the difference for me. And He can and will make the difference for you."

From what has God delivered you?

To whom, then, is He calling you?

ESM INTRODUCES "EGROUPS"

WHAT ARE OUR EGROUPTS?

eGroups are small groups of people who meet together on a regular basis. They are drawn together by common interests, a specific topic or activity, or a particular demographic.

In addition to offering a place of gathering for similar interests, but our eGroups also offer a place of community and spiritual growth. So, whether you are reading through a Bible Study together, serving with one of our Outreach Partners, or sharing a common interest, our eGroups offer that place for growth.

BECOME AN EGROUPT LEADER

Every eGroup is formed around the passions and skills of our people. We are here to empower you and equip you for leadership. So, do you have skills and passions for specific topics or subjects? Do you want to connect with others at Elevate Student Ministries?

Sr. High eGroup "Youth Disciple"

Did you know that the word "Bible" literally means "book". It is "the" Book. The Bible is more than just a bunch of stories, practical wisdom, or opinions about proper moral behavior. It is an

oracle of God...the very "Words" of God given to us through others! It is His revelation of Himself to us, a revelation of His relationship to people, and people's relationship to each other.

Maybe you can relate to this, "Inside me is this persistent longing to reach out to Someone; this desire to know if God has anything to do with me, to say to me; this need to know if the Bible has any power to offer me." (the "Human Problem" taken from lesson 1, Youth Disciple lesson book).

Want to know more?...I invite you to join us for an in-depth study of the Old Testament on Wednesday nights (6:15-8:00pm). Youth Disciple is designed to be a covenant group where we gather weekly to discuss and gather insights from each other from our reading assignments throughout



Sign Up Today!!!

CALL ∞ TXT Luckie Fink
(479) 409-5093

the week with a dvd component, to pray for and support one another. Each lesson involves 6 days of reading assignments to be done at home along with a Bible teaching and a challenge to be better disciples.

This is designed to be a 17 week study, but we may be able to combine a couple lessons to be able to finish before June.

Books will cost between \$15 - \$18

If you are interested or have questions, please let me know as soon as possible. Thank You!

Save The Date . . .

Feb. 5 Big Game Party (Super Bowl) Food, Drinks, Prizes etc.
@ The Shelton's 13700 Windsor RD 72212

Feb. 7 Discipleship Hub Meeting @ 6:30

Feb. 15 Beginning of eGroup "Youth Disciple"

Feb. 19 Winter Jam @ Verizon Arena

Feb. 22 Ash Wednesday (No ESM)

Feb. 24-26 Veritas @ Rogers, AR. (No ESM)

March TBA ESM Rice Depot Project

March 10 Confirmation Day W/ Bishop Charles Crutchfield

April 12 ESM Center Praise Band will be @ Arkansas Baptist

Links To Our Future Programs . . .

<http://www.arumc.org>

<http://www.sosmemphis.org>

<http://ozarkmissionproject.org>

<http://www.studentlife.com>